

# CONTENT

---

02

Khurshed's journey  
of a hundred miles

04

The Indian context

06

Iswar Sankalpa

07

Our programmes

08

Our chosen path  
of work

09

A quinceañera  
of impact

10

Health

12

Education

14

Livelihood

16

Social

18

Empowerment

20

The pulse  
of 2022-23

22

Governance,  
accountability and  
transparency

23

Financial statements

27

Our partners  
and supporters

31

How you  
can help



Once the storm is over, you won't remember how you made it through, how you managed to survive. You won't even be sure, whether the storm is really over or not. But one thing is certain, when you come out of the storm, you won't be the same person who walked in. That's what is storm is all about.

– Haruki Murakami, *Kafka*

## ON THE SHORE

**We** leveraged the guidance of our donors, community members and Governing Body during the last year.

**We** emerged from the pandemic storm that disturbed the foundation of our lives.

**We** emerged stronger and more resilient, continuing to touch the lives of people.

**We** look to the future with renewed commitment to remain inspired, invigorated and invested.

A handwritten signature of Sarbani Das Roy in black ink.

SARBANI DAS ROY  
SECRETARY



# KHURSHED'S JOURNEY OF A HUNDRED MILES

of overcoming and becoming



## From the merciless streets

Khurshed, a man in his late 20s, found himself in the grips of homelessness, battling severe mental health issues on the streets of Kolkata

## To a therapeutic shelter

Seeking solace, he accepted care and treatment at Iswar Sankalpa's shelter. Eight months, his commitment and the team's unwavering support, birthed a poignant transformation

## Emergence of a craftsman

Donning the hats of creativity and compassion, he mastered vocational training in decoupage to fulfil bulk orders and assumed the role of a caregiver for fellow shelter residents



## Withstood the test of time

On the path to recovery, he reminisced about his hometown across borders. Given the challenges posed by the pandemic, the team tirelessly networked, advocating for his return

## Embracing an employment opportunity

With time, his growing determination and dreams made him secure a job at a neighbourhood food stall. He returned to a life in the community, with dignity

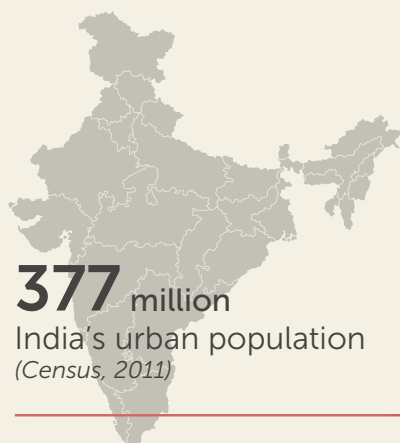
## Bidding a bitter-sweet farewell

In February, he traversed borders, reuniting with his family in Bangladesh; with his journey leaving indelible imprints of hope, human reconnection and healing on our collective canvas

**Amidst** a swirl of emotions, Khurshed's voice echoes, "Mixed feelings accompany me. Fond memories of friends, caregivers, and the City of Joy will linger. I'll cherish picnics and bus rides to Durga Puja pandals."

# THE INDIAN CONTEXT





At least

**1%**

**of them are homeless**

(Source: Supreme Court  
Commissioner's  
Office)



**1 in 7**

Indians is affected by a  
Mental Disorder

**1997 to  
2017**

Proportional  
contribution of  
mental disorders to  
total disease burden  
in India doubled

(The burden of mental  
disorders across the states  
of India: the Global Burden  
of Disease Study 1990-2017)



## RIGHTS AND REALITIES

Shelters for the Urban  
Homeless Scheme (2013)

Pradhan Mantri Awas  
Yojana (PMAY, 2015)

National Mental Health  
Policy (2014)

Rights of Person with  
Disabilities Act (2016)

Mental Healthcare Act  
(2017)

**PMAY  
Mission for  
'Housing for all'  
(2015-2022)**



In 2022, only

**50%**

of sanctioned affordable  
housing units for urban  
poor were completed

In 2019-20, National  
Mental Health  
Programme did not utilize

**93%**

of the allocated funds



Decline in National  
Mental Health  
Programme budget as  
a share of Union Health  
Budget (%)



Indian State  
Community Mental  
Health Care  
emphasizes

**BIO-MEDICAL  
APPROACH**



# ISWAR SANKALPA

A snapshot

## ABOUT US

Founded in 2007

**Location:** Kolkata,  
West Bengal  
(India)

**Themes:**  
Homelessness,  
psycho-social  
disability, socio-  
political exclusion



**Working with the marginalized**  
Homeless persons and those  
from low resource settings  
battling psycho-social  
disabilities



**Working towards the goal**  
Recovery, rehabilitation and  
eventual re-integration, for the  
promotion of their rights



## Vision

To ensure  
dignity and  
holistic well-  
being of  
person with  
psychosocial  
disabilities.



## Mission

To lend a helping hand  
to those with psycho-  
social disabilities,  
particularly to those  
from under-privileged  
sections of society,  
and to do so in a  
humane manner and  
to empower them in  
attaining their rights.



## Values

Respect for  
differences,  
recognize  
inherent dignity  
and worth of  
each individual,  
client centred  
work, quality  
assurance,  
collaborative  
approach



# OUR PROGRAMMES

Enabling movement from the fringes to the forefront

## Naya Daur

A World Health Organisation (WHO) recognised, community-based outreach programme which caters to homeless persons with psychosocial disabilities on the streets, to build a community support system around them.

## Sarbari

A shelter for recovery and rehabilitation for urban homeless women with psychosocial disabilities.

## Marudyan

A shelter for recovery and rehabilitation for urban homeless men with psychosocial disabilities.

## Crust & Core

A livelihood programme for homeless and home-based women with psychosocial disabilities serving as a training unit cum café for sustainable employment in the F&B industry.



## Reintegration

Inclusion of persons with psychosocial disabilities through reunion with families, access to entitlements, vocational skill building, avenues for supportive employment and community resettlement.

## Urban Mental Health Programme

Integrating mental health services with the primary urban health-care centres in partnership with Kolkata Municipal Corporation (KMC).

## Nayagram

An assisted community living programme in Uttar Kashipur and West Bengal for homeless women with psychosocial disabilities, who earn a livelihood through engagement in agricultural work and animal husbandry.

# OUR CHOSEN PATH OF WORK

Our work is rooted in community based rehabilitation model of care and treatment which addresses the social and structural determinants of homelessness and mental illness.



Our ABC framework of comprehensive mental health care and treatment integrates multi-level intervention with collaboration across various sectors.

Access to resources	Behavioural shifts in stakeholders	Care networks strengthening
1. Community outreach for access to holistic health care, treatment and support	1. Service user level: Developing help-seeking behavior, reframing trauma and re-building self-hood	1. Cadre of trained community volunteers
2. Access to safe special shelters and alternative community living options	2. Family and community level: Psycho-education, family counselling, awareness generation	2. Capacity development of CSOs, government officials, police, and healthcare professionals to become partners in change.
3. Pre-vocational training (life skills and functional literacy)	3. Systems level: Advocacy, access to entitlements	
4. Vocational training and supported employment opportunities		
5. Access to social spaces and community activities (awareness events, festivals, day-outs)		

# A QUINCEAÑERA OF IMPACT

15 years of touching and transforming lives



**3140+**

Homeless persons with psychosocial disabilities supported through community outreach

**33**

Homeless persons with psychosocial disabilities experienced Assisted community living

**357+**

Community volunteers/caregivers extended active care & support to them

**1450+**

Persons who have battled psychosocial disabilities engaged in livelihood activities

**819+**

Homeless persons with psychosocial disabilities accessed shelter care

**380+**

Homeless persons with psychosocial disabilities accessed entitlements

**530+**

Homeless persons reunited with their families across the country and beyond

**6000+**

Persons from low resource settings accessed mental health care from primary health centres





With a firm belief in the promotion of comprehensive mental health, we are redefining care and treatment by moving beyond medical paradigms, championing a community where well-being is a fundamental right.

Bio-psychosocial  
approach

Access to  
care and  
treatment

Community  
driven care



# THE DIFFERENT PATHWAYS TO HEALTH AND HEALING (2022-23)



**21**

Street service users accessed mental health care from ward health units



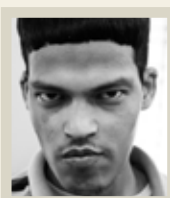
**110+**

Service users participated in yoga, arts-based and dance movement therapies



**2071**

Service users of urban mental health programme availed counseling services



## The rhythms of recover...

Abandoned near the splendor of Victoria Memorial Hall in Kolkata, *Santesh*, a young man, came to our homeless

men's shelter, *Morudyan*, in March 2020, bearing the scars of severe neglect. His existence became about fragmented identities, physical ailments, compulsive cleanliness rituals, and a fractured connection with the external world.

Silenced by a series of struggles, his voice found resonance in the art-based therapy he began participating in 2022. After a significant period of engagement, a breakthrough emerged- he started adorning trays with vibrant colours in our vocational training unit. Stepping out of his cocoon, he exhibited a

renewed sense of trust in himself, reflected in his vigor towards the shelter's daily activities.

Participating without any inhibitions, *Santesh* added splashes of joy to various celebrations, sports, events, and picnics. His expressions found words when he declared one day, "*Mujhe ghumne jana hai bahar*," yearning for outdoor escapades.

As he transcended the confines of his former self, a story of self-discovery unfolded. He started sharing small clues about his origin, and our quest to decode the mystery of his roots gained momentum.

We are determined to assist him in returning to the familiar embrace of his home and family with a newfound identity.

*Santesh's journey challenges the standard narrative of what treatment should entail, asserting that recovery, is more than a mix of medicines and other traditional approaches.*



## EDUCATION

Committed to nurturing a more compassionate and resilient society, we're equipping service users with practical literacy and life skills, raising community-level mental health awareness and building a cadre of sensitized stakeholders through advocacy.

Capacity  
building

Informed and  
empathetic  
society

System  
changes

# CHALLENGING AND CHANGING EXISTING KNOWLEDGE, ATTITUDES AND PRACTICES (2022-23)



**76**

Homeless service users participated in functional literacy and life skills classes



**1296**

Individuals reached through 73 community awareness camps



**33**

Families of service users provided psycho-education



## Scripting a new chapter of life...

"I first came into contact with Iswar Sankalpa on the 6th of July 2022 when I was in a mental state that made me consider ending my life.

A respected person urged me to visit their office, so I reluctantly went, believing it wouldn't help. I met the psychologist, but my behaviour was inappropriate at first...just the way perhaps a lesser educated person would behave. After three such visits, she finally spoke to me and asked me to reflect on what I had shared. A week later, she recommended I consult their psychiatrist and I started taking medicines too. After almost a month, I apologized to her for my behaviour in the initial days. She was very understanding.

I was struggling to regain my old job, which I lost during Covid, and the idea of unemployment

was unbearable. I confided in her...meanwhile, she suggested I visit Morudyan, Iswar Sankalpa's shelter for homeless men with mental health issues; twice a week.

I joined the centre in September 2022 as a peer trainer. Somehow, after 2 months I felt twice a week is not enough for them. I should be more present and more giving...there's a greater requirement here. I am not embarrassed to share that I have lived the lives of these men, myself... I had been homeless too, begged for food under the Medical College; slept on the footpath, and feared the police. Nobody from my family bothered to care or find out about my whereabouts. I was also put in a home but I wasn't treated well.

The selfless staff members who serve here inspire me. It is the work of God, and the name *Iswar Sankalpa* truly captures the essence of their work."

- **Abir** (service user and peer trainer), 38 years





## LIVELIHOOD

With a mission to reinstate the dignity of our service users, we're providing diverse skill development and livelihood opportunities tailored to their abilities and expressed interests. Increased productivity is catalysing their community reintegration.

Redefining  
identity

Self-worth

Financial  
independence



“ It has been almost a year since I have been in this shelter home, Sarbari. I came from Delhi. My parents used to not keep well...I used to often fight with my brother... my brother just left me here on the streets of Kolkata...it was the police who kept questioning me and then got me here. I can't believe what he did to me (voice choking).  
After a few months, I started feeling okay. Also, started working here in the cafe (Crust & Core)...I found it interesting. I have learned to make bread and cookies... it makes me very happy as I stay engaged and my time is well spent. I am earning 3k/month and it is all in the bank. I wish to purchase a mobile phone soon! ”

- **Khushi**, a 30-year-old female homeless service user working at Crust & Core



### ...Of Courage & Confections

In the heart of our community, local police found a distressed young homeless woman, Tanya – clad in a patchy dress, hair tangled, with a plaster

clinging to her wounded leg. Seeking refuge from the storm within, she found her way to our shelter in 2019.

Although severe mental health issues rendered her homeless, it failed to extinguish the flicker of hope. Through provisions of food, care, medicines, counseling, alternative therapies and a safe shelter, the wheels of transformation began to turn. She started tasting the simple joys of life by listening to music and nurturing the garden.

The turning point came during a choice-making session in late 2021 when she expressed her desire to work at our café, Crust & Core. Soon enough, she became an integral part of the café family.

Today, in the warm glow of our café ovens, she rolls out delectable bakery products. With a genuine smile, she extends these offerings to all. Her journey is akin to the magical transformation of raw materials into aromatic cakes, reminding us of the need for a delicate balance- the right mix of ingredients, a nurturing environment, affection and a gentle touch.

*She stands as a remarkable Mindchampion, embodying hope in its truest form.*



Recognizing the connection between social well-being and overall recovery, we're actively engaging the community and families in the care and treatment process. We're also encouraging service users to participate in community life.



# COMMUNITY AND CONNECTIONS TRANSFORMING LIVES (2022-23)



**5**

Support groups  
in community with  
50+ service users



**172**

Community  
volunteers extended  
psychosocial care



**12**

Homeless women  
part of assisted  
community living



**In the quietude of  
care and compassion,  
we hear the loudest  
echoes of healing...**

Two years ago, on the vibrant streets of Rajabazar, our community outreach team stood still observing

Jiten- an unkempt homeless man, draped in rugged attire, and peculiarly coated in mustard oil. For months, he wandered from Rajabazar to Narkeldanga, resisting the team's efforts at building rapport with him. Despite initial challenges, we enrolled him and initiated daily meals. Upon a doctor's check-up, he was diagnosed with a severe mental health condition. Persistent efforts made him accept our service.

Uttam, a benevolent figure from the local community, extended a compassionate hand. Though he hailed from humble origins, he volunteered as Jiten's caregiver. His family generously provided food, creating a

therapeutic bond that surpassed familial ties. Jiten, enveloped in their non-judgmental embrace, began feeling more included, which reflected positively on his transformation.

Love, acceptance and care became catalysts for Jiten's recovery. His hygiene and social interactions steadily improved. Uttam employed him in his modest factory space too. With time, Jiten started greeting with a smile, grooming without supervision and working diligently. Today he walks with dignity and works with pride – living life with a sense of purpose.

This human story of recovery, within the community, under the compassionate gaze of a fellow community member like Uttam, speaks volumes about the significance of embracing those on the fringes of society. In a society marked by apathy, despair, and pervasive fear and disdain for those living on the streets (especially the "mad"), Uttam's inspiring approach stands out. It proves that genuine inclusion can rewrite the destinies of those often dismissed.





Driven to enable service users' greater participation in sociocultural-economic-political spheres, we're enabling their access to crucial resources (relevant knowledge, economic opportunities and, other entitlements). This equips them to make informed decisions across various aspects of their lives.

Enhanced  
self-esteem

Amplified  
voice

Autonomy



# FACILITATING SERVICE USERS' ACCESS TO ENTITLEMENTS (2022-23)



9

Voter IDs



14

Aadhaar cards



3

Ration cards



28

Disability cards



24

Disability pension



13

Bank A/Cs



## The Road (not) taken...

In a mental health camp organised for the Kashipur village community in 2022, Seema, a young woman in her early 30s, came seeking support. Burdened by a past steeped in early matrimony and accusations, coping with her husband's incarceration on charges of rape, dealing with mistreatment from in-laws, and facing unyielding parents, she grappled with the conflict between the safety of the familiar and the daunting uncertainty of life without a partner. Regular counseling sessions helped her navigate the complexities of her emotions.

Over time, she started participating in vocational training sessions, skillfully crafting Thole Bags. Functional yet carrying lingering symptoms, the bag became her source of solace. As time unfolded, her rhythmic work started to hum a therapeutic anthem.

She started revealing a determination to return to work. Her mother, hopeful for a remarriage, faced a formidable declaration. Seema vowed not to conform- she declined to marry anyone with multiple children or who was shackled by the chains of old age.

The Thole bag was more than a vocational work for her it seems- each stitch symbolising her silent victory over her adversities. With the threads of indomitable courage and resilience, she weaved the tale of agency over destiny.

# THE PULSE OF 2022-2023

## APRIL

- Empowered 74 Kolkata Municipal Corporation medical officers with mental health Training, facilitated by Dr. Jai Ranjan Ram
- Celebrated a decade of 'Saksham' (our vocational unit); honouring trainees in their remarkable journeys



## AUGUST

- Organised mental health advocacy meeting with 50 police personnel for collaborative work towards the cause
- Celebrated Rakhi across programmes, collectively committing to values of care and compassion



## JULY

- Marked a decade of urban mental health programme: Registered 6000+ service users and expanded to two new wards (96 and 6)
- Introduced arts-based therapy by 'Marga' (a wellness studio in the city) for Service Users' Psychosocial Recovery



## MAY

- Organised mental health camp at Nayagram; 86 villagers of Kashipur sought mental health support
- 12 Nayagram residents enthusiastically participated in community sports event, experiencing inclusion through games

## SEPTEMBER

- Ms. Sarbani Das Roy, our founder was Conferred the 'Durga Samman Award' for socially impactful work
- The functional literacy team presented the 'Teaching Learning Curriculum' for persons with psychosocial disabilities on World Literacy Day
- Received a dedicated delivery vehicle from Nerolac CSR Team for 'Cafe Crust & Core'
- Organised mass awareness on world suicide prevention day, reached 610 individuals and engaged seven service users.

## JUNE

- Celebrated 15 Dedicated Years: Addressing Homelessness, Psychosocial Disability, and Advancing Community Care & Right-Based Practices.
- Alok & Hemen, Men's Shelter Residents Proudly Opened their Bank A/Cs





## OCTOBER

- Programmes conducted mass awareness on World Mental Health Day
- 20 service users were invited for Durga puja pandal inauguration at Deshapriyo Park.



## NOVEMBER

- Nayagram SHG 'Prottoy Mohila Dol' Bagged State Award: Outstanding Self-Help Group with Disabilities, Securing INR 15k Prize Money
- Dr E Arvind Raj, Professor, NIMHANS, Conducted a 3 Day Training for the Staff on Psychosocial Interventions

## DECEMBER

- We spread the Christmas cheer by organising an In-house Haat, exhibiting our livelihood training products
- 52 Community caregivers of the 'Naya Daur Programme' participated in the annual meet
- 'Morudyan Programme' residents gathered to watch the thrilling FIFA World Cup

## JANUARY

- The Iswar Sankalpa Family Cherished The Time at their annual picnic
- In the prestigious 65th Annual event of All India Congress of Obstetrics and Gynaecology, we exhibited our service users' handcrafted products



## FEBRUARY

- Celebrated Café Crust & Core's 5th Anniversary, Launching a Canteen at the American Consulate
- The Urban Mental Health Programme Staff Participated in Capacity Building Session on Psychosocial Interventions by Mr. Mohit Ranadip



## MARCH

- Hosted the 15th annual programme: Service users graced the stage with their unforgettable performances
- Festival of colours, holi, was celebrated with all the service users, stakeholders and staff
- 30 service users and shelter caregivers completed basic first aid and nursing training organized by all Indian institute of Health and Hygiene



# GOVERNANCE, ACCOUNTABILITY AND TRANSPARENCY

## Governing Body

Name	Gender	Occupation	Position	Amount paid 2022-23 (in INR)	Form of payment
Dr. Prabir Paul	Male	Psychiatrist	President	361000	Consultancy
Mr. Rajendra Khandelwal	Male	Entrepreneur	Vice-President	-	NA
Ms. Sarbani Das Roy	Female	Director, Iswar Sankalpa	Secretary	1140360	Salary + Consultancy
Ms. Rinku Soni	Female	Entrepreneur	Asst. Secretary	-	NA
Dr. Srikumar Mukherjee	Male	Psychiatrist	Treasurer	451200	Consultancy
Mr. Surajit Ray	Male	Corporate Trainer	Member	-	NA
Dr. Abir Mukherjee	Male	Psychiatrist	Member	163200	Consultancy
Ms. Jayati Saha	Female	Lawyer, Photographer	Member	-	NA

## Governing Body Meetings

Date	Attendance
27/04/2022	6/8
20/07/2022	6/8
31/07/2022*	22
23/09/2022	6/8
19/11/2022	6/8
22/03/2023	6/8

\*Annual General Meeting

## Information on Distribution of Staff by Gender and Salary

Slab of Gross Monthly Salary (in INR) Plus Benefits Paid to Staff	Male Staff	Female Staff	Total Staff
5001-10000	-	1	1
10001-15000	8	9	17
15001-30000	14	27	41
30001-50000	1	3	4
>50000 Total	1	2	3

Type of Personnel	Male	Female
Paid (Consultant)	7	3
Paid (Volunteer)	-	16
Unpaid (Volunteer)	2	5
Interns	-	8

## Details of National and International Travel by Staff/ Board Members at the expense of the organization in 2022-23

Travel Details	Amount (Rs.)
Total Cost of National Travel by Board Members/Staff on behalf of the Organisation (Included-Staff Training, Attending Meeting/Conference)	Nil
Total Cost of International Travel by Board Members/Staff on behalf of the Organisation	Nil



# AUDITOR'S REPORT

To  
The Members  
Iswar Sankalpa  
19/3 Pitambar Ghatak Lane, Kolkata 700027

## Report on the Financial Statements

We have audited the Consolidated Financial Statements of ISWAR SANKALPA, a Society registered under the Societies Registration Act, 1961 which comprise the consolidated Balance sheet as at March 31, 2023, and the Consolidated Income and Expenditure Account and the Consolidated Receipts and Payments Account for the year then ended, and notes to the financial statements, including a summary of significant accounting policies and other explanatory information.

The consolidated financial statements have been compiled and prepared incorporating the independently prepared financial statements audited by us as at 31st March, 2023 of the General Fund, General Fund – FC, Project SAMPOORNA – MISEREOR, SHELTER FOR URBAN HOMELESS (MEN) – MORUDYAN, SHELTER FOR URBAN HOMELESS (WOMEN) – SARBARI, NAYADAUR – THE HOPE FOUNDATION LTD, SAMBANDHAN- TATA TRUST, SAMBANDHAN –TIDES FOUNDATION, SAMBANDHAN- MARIWALA HEALTH INITIATIVE, HUMAN CAPABILITY FOUNDATION, INDIRA FOUNDATION, AZIM PREMJI PHILANTHROPIC INITIATIVES, VOCATIONAL UNIT & CAFÉ UNIT, and CORE SUPPORT-OAK.

## Responsibilities of Management and Those Charged with Governance for the Financial Statements

Management of the Society is responsible for the preparation of the financial statements and give a true and fair view of the financial position and financial performance in accordance with the Accounting Standards generally accepted in India. This responsibility includes the design, implementation and maintenance of internal control relevant to the preparation and compilation of the financial statements that give a true and fair view and free from material misstatement, whether due to fraud or error.

## Auditor's Responsibilities for the Audit of the Financial Statements

Our objectives are to obtain reasonable assurance about whether the financial statements as a whole are free from material misstatement, whether due to fraud or error, and to issue an auditor's report that includes our opinion. Reasonable assurance is a high level of assurance, but is not a guarantee that an audit conducted in accordance with the Standard on Auditing will always detect a material misstatement when it exists. Misstatements can arise from fraud or error and are considered material if, individually or in the aggregate, they could reasonably be expected to influence the economic decisions of users taken on the basis of these financial statements.

## Emphasis on matters

We have emphasized on the facts that the items of accounts for the General Fund and individual Projects of the Society carried out by it are recorded as independent set of separate units of Accounts and the consolidated statements of accounts are prepared incorporating them accordingly.

Further the Grants in Aid received for each project are considered as new or added liability in the each project.

Further, where the terms and conditions of the funding agencies so provide, the interest earned and the bank charges deducted are apportioned to the integral part of grants funded and otherwise the rest of interest and bank charges are apportioned to the Income and Expenditure Account as part of revenue items.

## Basis for Opinion

We conducted our audit in accordance with Standards on Auditing (SAs). Our responsibilities under those Standards are further described in the Auditor's Responsibilities for the Audit of the Financial Statements section of our report. We are independent of the entity in accordance with the ethical requirements that are relevant to our audit of the financial statements, and we have fulfilled our other responsibilities in accordance with these requirements. We believe that the audit evidence we have obtained is sufficient and appropriate to provide a basis for our opinion.

## Opinion

In our opinion, the accompanying consolidated financial statements of the entity are prepared, in all material respects, in accordance with the Laws of the country applicable to the Non-Government Organizations or Institutions and give a true and fair view

1. of the consolidated financial position of the entity as at March 31, 2023, and
2. of its consolidated financial performance for the year then ended in accordance with the Accounting Standards issued by the Institute of Chartered Accountants of India (ICAI).

For De Subir Kumar & Co  
Chartered Accountants  
Firm's Registration No. 317010E

CA Subir Kumar De  
Proprietor

Place: Kolkata  
Date: 21-07-2023

Membership No. 053022  
UDIN NO : 23053022BGY0IM2423

# CONSOLIDATED BALANCE SHEET AS AT 31ST MARCH 2023

LIABILITIES	Sch	AMOUNT	AMOUNT
<b>GENERAL FUND</b>			
As per last A/c		15829139	
Add: Excess of Income over			
Expenditure		1907639	17736778
<b>CORPUS FUND</b>			
As per Last A/c		4042370	
Add Received		165000	4207370
<b>FIXED ASSETS RESERVE</b>	J		11961880
- Annexure - B			
<b>CURRENT LIABILITIES</b>			
Unutilized Grant in Aid	J		
- Annexure - B			14489106
ESI Contribution Payable	I		24947
Profession Tax Payable	F		8590
Tax Deducted at source	G		44715
Employees cont. to PF Payable	I		67960
Employers cont. to PF Payable	I		74393
<b>Total</b>			<b>48615739</b>

ASSETS	Sch	AMOUNT	AMOUNT
<b>FIXED ASSETS</b>	H		14074840
<b>Advance for Land</b>			
- Advance against Construction Kashipur)			8274
Security deposit for CESC			163320
Security deposit In I.C.C.R			7000
Tax Deducted at source			8100
Advance for Vehicle fuel			5752
<b>CASH AND BANK BALANCES</b>			
<b>Fc</b>			
Cash in hand		21316	
SBI A/C 40099146684		5077318	
Synd. Bank A/C 95032010048521		1997595	
Synd. Bank A/C 95032010054251		43360	
SBI A/C 40280275341		209855	7349444
<b>NON - Fc</b>			
Cash in hand		94532	
SBI A/C 35161193511		13902601	
SBI A/C 40280272011		132802	
Synd. Bank A/C 95032010058129		7779503	
Synd. Bank A/C 95032010058114		386054	
Synd. Bank A/C 95032010054140		16303	
Axis Bank A/C 9220200583644		182229	
Bank of Baroda A/c 00360100011525		5000	
Axis Bank A/C 910010048707207		4499985	26999009
<b>Total</b>			<b>48615739</b>

Notes on Accounts - Annexure C

This is the Consolidated Balance Sheet signed in terms of our Report of even date.

For De Subir Kumar & Co  
Chartered Accountants  
FRN 317010E

CA SUBIR KUMAR DE  
Proprietor  
MRN 053022  
UDIN :23053022BGY0IM2423  
Kolkata, 21-07-2023

# CONSOLIDATED INCOME AND EXPENDITURE ACCOUNT FOR THE YEAR ENDED MARCH 31, 2023

EXPENDITURE	Sch	AMOUNT RS.	AMOUNT RS.	INCOME	Sch	AMOUNT RS.	AMOUNT RS.
To Direct programme cost	A		6364305	By Donation Received			
				- Foreign Donation		239720	
To Programme Related cost	B		1864778	- Donation General		2806295	3046015
				By Internship Received			8000
To Programme Support cost	C		935886	By Award Received			15000
				Grant in Aid Utilized			
To Staff Salary & Others	D		20252523	- As per ANNEXURE B	J		30255194
				By Amount Transferred from			
To Overhead Cost	E		1411203	Fixed Assets Reserve	J		1158672
				By Bank Interest			
To Provident Fund Paid			6827	Syndicate Bank		79942	
				AXIS Bank		144112	224054
To ESI Paid			31325	By Prior Period Expenses			70291
				By Sale of Vocational Material			662060
To Café Related Cost - Run by Beneficiary (K)			2705258	By Beneficiary contribution			28150
				By Sale from café - Run by beneficiary			1255084
To Bank Charges			25547	By Sale from Agriculture & Animal Husbandry			131428
				By Sale from Scraps Material			7145
To Depreciation	H		1426828	By Travel reimbursement			626
				By Annual Membership fee			70000
				By TDS Refund from IT (AY 21-22 & 22-23)			385
To Excess of Income over Expenditure			1907639	BY Interest on TDS			15
			<b>36932119</b>				<b>36932119</b>

This is the Consolidated Income and Expenditure Account signed in terms of our Report of even date.

For De Subir Kumar & Co  
Chartered Accountants  
FRN 317010E

CA SUBIR KUMAR DE  
Proprietor  
MRN 053022  
UDIN :23053022BGY0IM2423  
Kolkata, 21-07-2023



# CONSOLIDATED RECEIPTS AND PAYMENTS ACCOUNT FOR THE YEAR ENDED MARCH 31, 2023

RECEIPTS	Sch	AMOUNT	AMOUNT	PAYMENTS	Sch	AMOUNT	AMOUNT
To Balance B/d				By Direct programme cost	A		6364305
Cash in hand		203978		By Programme Related cost	B		1864778
Synd. Bank A/C 95032010048521		2077327		By Programme Support cost	C		935886
Synd. Bank A/C 95032010054251		38373		By Staff Salary & Others	D		20252523
Synd. Bank A/C 95032010058129		6419595		By Overhead Cost	E		1411203
SBI A/C 40280275341		56139		By Bank Charges			37581
SBI A/C 40099146684		1954663		By P.Tax paid	F		101510
Synd. Bank A/C 95032010058114		295826		By T.D.S. paid	G		536084
Synd. Bank A/C 95032010054140		15839		By Employee Contribution to PF	I		821634
SBI A/C 35161193511		10546977		By Employer's Contribution to PF	I		895857
Bank of Baroda A/c 00360100011525		5000		By E.S.I Paid			326008
Axis Bank A/C 910010048707207		4350381	25964098	By Fixed Assets	H		427386
To Donation Received							5752
- Foreign Donation		239720		By Café Related Cost	K		2705258
- Donation General		2806295	3046015				
To Corpus Donation Received			165000				
To Internship received			8000				
To Grant in Aid Received							
- Project Nayadaur (THF)		2554650					
- Side by Side/HUBEJE		462384					
- Indira Foundation		2480431					
- Mariwala Health Initiatives		6694381					
- A.P.P.I		9171000					
- Shelter for Urban Homeless (Men & Women)		1151795		By Closing Balance C/d			
- Grant Received - CSR & TSM		1070000		<b>Fc</b>			
- Global Go Green		767500		Cash in hand		21316	
- Project Sambandhan - HCF		5067891		SBI A/C 40099146684		5077318	
- Project Sampoorna (MISEREOR)		4420763		Synd. Bank A/C 95032010048521		1997595	
- Give Foundation (Fc) & NON Fc		2761254	36602049	Synd. Bank A/C 95032010054251		43360	
To Tds Refund from IT (AY 21-22 & 22-23)			385	SBI A/C 40280275341		209855	7349444
To Interest on TDS			15				
To Bank Interest - Canara Bank		201434					
To AXIS Bank		144112	345546				
To Award Received			15000				
To Beneficiary Contribution for hygiene			28150	<b>NON - Fc</b>			
To Travel Imbursement			626	Cash in hand		94532	
To Prior Period Expenses (Written Back)			74251	SBI A/C 35161193511		13902601	
To Sale of Vocational Material			662060	SBI A/C 40280272011		132802	
To Sale from Agriculture & Animal Husbandry			131428	Synd. Bank A/C 95032010058129		7779503	
To Sale from café - Run by beneficiary			1255084	Synd. Bank A/C 95032010058114		386054	
To Annual Membership Fee			70000	Synd. Bank A/C 95032010054140		16303	
To Sale From Scraps			7145	Axis Bank A/C 9220200583644		182229	
To P.Tax received	F		102580	Bank of Baroda A/c 00360100011525		5000	
To T.D.S. Deducted or Received	G		523060	Axis Bank A/C 910010048707207		4499985	26999009
To Employee Contribution to PF	I		828319	<b>Total</b>			<b>71034218</b>
To Employer's Contribution to PF	I		903874				
To ESI Received	I		301533				
<b>Total</b>			<b>71034218</b>				

Notes on Accounts - Annexure C

This is the Receipts & Payments A/c signed in terms of our Report of even date.

**For De Subir Kumar & Co**  
Chartered Accountants  
FRN 317010E

**CA SUBIR KUMAR DE**  
Proprietor  
MRN 053022  
UDIN :23053022BGY0IM2423  
Kolkata, 21-07-2023

"Iswar Sankalpa's work with homeless persons wandering on the streets is guided by the principles empathy, respect, dignity and enormous patience. We have our highest regards to these values and the team behind their engagements with the most vulnerable. Our best wishes are with Iswar Sankalpa in this journey."

- Azim Premji Foundation

## OUR PARTNERS

- |   |   |  |
|---|---|--|
| <ul style="list-style-type: none"> <li>• Azim Premji Foundation</li> <li>• Global Greengrants Fund</li> <li>• Hubeje VZW</li> <li>• Human Capability Foundation</li> <li>• Indira Foundation</li> </ul> | <ul style="list-style-type: none"> <li>• Mariwala Health Initiative</li> <li>• Misereor</li> <li>• Paul Hamlyn Foundation</li> <li>• Social Welfare Department Government of West Bengal</li> </ul> | <ul style="list-style-type: none"> <li>• The Hope Foundation Ltd</li> <li>• Tides Foundation</li> <li>• Kolkata Municipal Corporation</li> </ul> |
|---|---|--|

## ORGANISATIONS WHO SUPPORTED US

Acceltree Software Pvt Ltd	Om Namoh Sivay
Anant Aha Foundation	Padmashambhava Centre For Charitable Activities
Aradhana Trust	Pally Saradiya Club
B.P. Trading	Periwal Construction LLP, FMC Fortuna
Balak Sangha Club	Prakash Charitable Trust
Bhumishuta	Prava Devi Goenka Foundation
Canara Bank Employees Union	Responsible Charity Society
Cotton Casuals (India) Private Limited	Rotaract Club Of Calcutta Universe
Dignity Foundation	Rotary Club Of Calcutta Dalhousie
DPS Ruby Park	Rotary Club Of Calcutta Innercity Trust
Dugar Automotives Private Limited	Rotary Club Of Calcutta Majestic
Eka Initiative	Rotary Club Of Calcutta Megacity
G.D. Birla School	Rotary Club Of Calcutta New Alipore Trust
Give Foundation Inc	Rotary Club Of Calcutta Sun Shine
Giving Impetus To Voluntary Effort UK	Rotary Club Of Calcutta Sutanuti
Hive India	Rotary Club Of Jadavpur Trust
Inner Wheel Club Of Calcutta	Rotary Kolkata
Intas Pharma	Round Table India
Jay Bajrang Bali	RVF
Kamarhatty Company Limited	Shine Pharma
Kopaipar	SVF Entertainment Pvt Ltd
Kutchina Foundation	Tarun Sinha Memorial Trust
Madgul Parks Private Limited	Tata Housing Avenida
Nawkiran Polyplast Private Limited	Vendors - Lexus Credit Private Limited
Nepal Sweets	Women's Christian College

# INDIVIDUALS WHO SUPPORTED US

A. Raha  
Abhijit  
Abir Mukherjee  
Aditya Narayan Saha  
Akbar Hossain  
Allama Burman  
Alok Jasowar  
Alokita Sengupta  
Amar Chand Kundu  
Amit Shaw  
Amrita  
Amrita Baid  
Anand Kumar Sharma  
Anand Mishra  
Anand Or. Mudra  
Ananth K. Mudra  
Angana Dutta  
Anita Patwari  
Anjana  
Anjana Sengupta  
Ankit Gupta  
Ankita Agarwal  
Ansika Mongra  
Anuradha Sen  
Anwar Hossain  
Aparna Mohanta  
Archana Salapuriya  
Archanaa Ananda  
Archita  
Arindam Chatterjee  
Arindam Saha  
Arjun Kar  
Arpita Ghosh  
Arpita Roy  
Arundhuti Aich  
Chakraborty  
Ashish And Sanchita  
Avishek Bhattacharjee  
Ayan Adhikary  
Bachhu Mallick  
Balle Singh  
Bandana Bhattacharjee  
Bani Dutta  
Basanti Dutta  
Bhabotari Das  
Bhola Das  
Bidisha Barman  
Bimla Devi Kothari  
Binod Kumar  
Biplab Choudhary

Bubli Singh  
Chandan Routh  
Chandani Ghosh (On  
Behalf Of Sipaa)  
Chandrabali Sen  
Chandrima Roy  
Chayanika Bhiwaniwala  
Deepak Choudhury  
Deepanjan Das  
Devashis Mullick  
Dhanesh Shaw  
Dipankar Adhya  
Dipankar Roy  
Dola Pal  
Dr. Avijit S Majumdar  
Dr. Ketaki Sharma  
Dr. Prabir Paul  
Dr. Shiladitya Mukherjee  
Dr. Sushmita Chattopadhyaya  
Dr. Prabir Pal  
Dulal Das  
Durga Das Basu  
Durgaprasad Shaw  
Garima Chandak  
Gopa Ghosh  
Gourab Agarwal  
Gourav Anand  
Goutam Agarwal  
Goutam Ganguly  
Goutam Swami  
Gurwinder Singh  
Harcharan Singh  
Hasi Seal  
Ilina Roy  
Indraneel Bhattacharya  
Indu Ray  
J. Parekh  
Jagruiti Meheta  
Jaita Khaitan  
Jay Prakash Prasad  
Jaya Menon  
Jayashree Poddar  
Jayati Bagchi  
Jayati Saha  
Jhilik Dutta  
Jhon Doe  
Jitesh Bhavisi  
Kalpana  
Kanika Guha  
Kanta Periwal

Kastura Bandyopadhyay  
Krishna Datta  
Kusum  
Laboni Roy  
Lakhsbir Kaur  
Lt. (Col) Brij Kumar Bhatia  
Madhuri Nawalgariya  
Mahua Bhaumik  
Mahua Guha  
Mallika Biswaroop Ukil  
Manami Basu  
Manav Jain  
Mani Gupta  
Manika Kejriwal  
Manika Luktuke  
Manju Poddar  
Manmohan Mittal  
Mansi Sanghvi Bhayani  
Mayur Lapana  
Md Alam  
Mita Mullick  
Mita Roy  
Monica Rajendra Luktuke  
Mukta Mukherjee  
Namrata Saraf  
Nandini Chowdhury  
Nandini Lahiri  
Nandini Mukherjee  
Navanil Ghosh  
Neha Prahladka  
Nibedita Bairagy  
Nilam Tulsian  
Nilanjana Saha  
Niranjan  
Niru Singhanian  
Nirupama Jana  
Nishita Goel  
Nishita Halder  
Nutan Goyel  
Obhijit Basu  
Pally Saradiya Club  
Parimal Daptari  
Parinita  
Partha Saha  
Prasanta Kumar Basu  
Pratima Nayar  
Prayash Foundation  
Pritam Biswas  
Priti  
Priti Roy

Priya Singh  
Priya Singhi  
Priyao Rajgariya  
Prodorsita Dhar  
Pushpa Satnakia  
Radhika Dhupela  
Rahee  
Rahul Ghosh  
Raj Gariya  
Rajib Basu  
Rajkumar Singh  
Raju Hait  
Rakhi Sankar Ghosh  
Rakhi Sarkar  
Ramprasad Poddar  
Rana Majhi  
Ranjit Sen  
Rashmi Acharya  
Rashmi Himanshu Acharya  
Rashmi Rathie  
Ravi Shankar Gupta  
Reena Daw  
Reshmi Agarwal  
Rinku Soni  
Rishika Dey  
Rita Bhattacharjio  
Ritiksa Pal  
Riya Roy  
Rohan Mukherjee  
Ronit  
Ruby Singh  
Ruchika Garg  
Rumi Bhattacharya  
Rupak Mitra  
S. Mukherjee  
S. Nabinder Singh Meher  
Sabrina  
Sahoni Nag  
Sakuntala Kanui  
Sambhunath Ghosh  
Samrat Sardar  
Sanchari Datta  
Sandip Kantha Mukherjee  
Sangita Banerjee  
Sanjay Das  
Santanu Mitra  
Sarabjit Nag  
Sarvani Das Roy  
Sarita Mohta  
Saswati Chatterjee



## INDIVIDUALS WHO SUPPORTED US

Satarupa Mukherjee	Soma Roy Acharya	Sumita Bagchi	Sweety Poddar
Sayantan Das	Sonali Vagani	Sumita Chatterjee	Tanusree Das
Sayantan Dutta	Soumen	Sumita Pal	Tapos Ghosh
Seema Karnani	Soumi Sengupta	Sumita Roy	Tridib Halder
Seneurita Roy	Mazumder	Sumita Saha	Tripti Bhattacharya
Shamima Khatoon	Soumyendra Mohan	Sumona Roy	Trishna Ghosh Saha
Shampa Sengupta	Joarder	Sunanda Pal Dutta	Tumpa Saha
Sharmishta Bhattachariya	Srijani Sarkar	Supriya Halder	Uma Bajaj
Shivani Gupta	Srikumar Mukherjee	Suprotik Poddar	Uma Ghosh
Shomoshree	Subal Mondal	Surajit Ghosh	Usha Pais
Roychowdhury	Subhra Bhattacharya	Surajit Ray	Usha Tubrewal
Shreyasree	Suchitra Dey	Surendra Kanui	V. Mille Sengupta
Shuvojoy Chowdhury	Sudhir Mukherjee	Surojit Roy	Vartikka Kaul
Shyamali Pal	Sudipta Munshi	Sushanta Banerjee	Vasoutben Vastais
Siddhartha Saha	Sujata Mitra	Susmita Bose	Veenu Sachdev
Sivam Ghosh	Sujoy Krishna Mitra	Susmita Chattopadhyay	Venil Sumantran
Sivani Senyria	Sukumar Mallick	Swapna Pal	Veronica Makhil
Sk. Sayed	Suman Agarwal	Swati Mukherjee	Vijaya Daing
Soham Tuduh Saha	Suman Mallik	Swati Sen	Vikram

## VOLUNTARY CAREGIVERS FROM THE COMMUNITY

Aalo Das	Chandan Halder	Kajol	Md Waris
Abdul Quym	Chandan Shaw	Kalyani Halder	Md. Afzal
Afsari Begum	Chintu Routh	Kasinath Ghosh	Md. Akib
Akbar Hossain	Choton Ghosh	Khaleda	Md. Amjad
Akhtar Ali	Chotu	Kiran Das	Md. Anish
Amala Naskar	Debashis Goutam	Krishna Sardar	Md. Irshad
Anwar Hossain	Dhanesh Shaw	Krishna Shaw	Md. Khalil
Asima Das	Dilip	Kuttobdin Halder	Md. Khurshid
Baban Ali	Dipa Das	Laltu Kayal	Md. Shamim
Bablu Jadav	Dipankar Das	M. Alam	Md. Tajuddin
Baby Chatterjee	Dulal Das	Madhav Chandra Saha	Mihir Das
Basanta Chowdhury	Durgaprasad Shaw	Mahendra Shaw	Mohammad Zahid
Beauty Halder	Farah Naaz	Majeeda Shek	Montu Gomes
Bhanu Halder	Gobindo Maghi	Manik Pal	Munna
Bhavodrahi Das	Gopal	Manoj Shaw	Munna Das
Bhola	Gopal Halder	Md. Alimuddin	Musari Begum
Bhola Thakur	Gopal Purokait	Md. Imtiaz	Mustafa Ahemed
Bijan Singh	Goutam Naskar	Md. Kalam	Nabab
Bijay	Himanshu	Md. Khurshid	Nabin
Binod Kr Shaw	Iftekhan Sk	Md. Nasim	Nalin Sarkar
Binod Sonkar	Indrajit Bag	Md. Sajjad	Narayan Halder
Biswanath	Jayprakash	Md. Sanawar	Naseema Begum
Bubai	Joydeb Das	Md. Tajuddin	Naushad

# VOLUNTARY CAREGIVERS FROM THE COMMUNITY

Nilu Das	Raju Majar	Sanatan	Sonu Shaw
Nimai Kr Dutta	Ram Das	Sandhya Roy	Subodh Chandra Das
Niranjana	Ramakanta Bhuiya	Sandip Mukherjee	Sukur Ali
Pandit	Ranjan 2	Sanjay Das	Sunil
Parimal Daptri	Ranjeet	Sanjay Hazra	Suraiya Begum
Pervez	Ranjit Biswas	Sanjoy Roy	Surajit
Pradip	Ranjit Mondal	Sanju Pramanik	Swapan Mondal
Prasenjit	Ranjit Saha	Sarbajit Nag	Swapan Saha
Pratap Singh	Rashid	Shambhu Bhowmik	Tandra
R. Chakarbarty	Robin Mondal	Shambhunath Ghosh	Taraknath Prasad
Raees Khan	Rupa Goswami	Shantu Samanta	Tinku Das
Raghu Singh	S. Alam	Shekh Latif	Uttam
Rahul	S. Chowrasia	Shib Shankar	Uttam Prasad
Rajesh	Sadhan Roy	Shiba	Varma Prasad
Rajesh Mondal	Sajid Hossain	Shibu Shil	Vijay Shaw
Rajkumar Shaw	Salauddin	Shrabanti	Vinod Kumar
Rajkumar Singh	Salauddin Alam	Shyamal	Zafari Imam
Raju	Sambhu Roy	Sk Amjad	
Raju Hait	Sambhu Saha	Sonu Kumar Gon	

## HOW YOU CAN HELP

Donation options	How it helps
Support Medicines for a Service User ₹1200	Covers medicines for one service user for 3 months
Meals for Male Shelter Service Users ₹12,600	Covers breakfast and dinner for one week for 30 residents
Special Occasion Lunch (Non vegetarian) ₹26,000	Special lunch freshly cooked and served in our shelters for 120 clients in celebration or memory of an occasion
Festival Clothes ₹42,000	Covers new dresses for 120 service users
Supporting a Service User towards Independent Living in the Community ₹15,000	Supports living expenses for 3 months for one service user, working on an organic farmland owned by Iswar Sankalpa
Corpus Fund ₹50,000	Provides financial stability to the organisation and aids in sustaining the projects

### No Strings Attached

Any amount of your choice can be donated through online transfers, cash or cheque, to support homeless persons with psychosocial disability. You can also contribute through donations in kind.

### Contact:

adrita@sankalpa.org or 9830069658  
mrinmoyee@sankalpa.org or 9903942044

### Volunteer & Internship Programmes

Iswar Sankalpa provides a vast range of internships and volunteering opportunities in different ongoing programmes. We invite you to lend your skills and expertise to our cause. To find out more, drop a mail at [hr@sankalpa.org](mailto:hr@sankalpa.org)

Society Registration No. S/1L/42976  
Date of Registration: 06.03.2007  
12A Unique Registration Number: AAAAI1966NE20221  
80G Unique Registration Number : AAAAI1966NF20091  
FCRA Registration: 147120892  
PAN: AAAAI1966N



## BEYOND FUNDING

### Our funders' experience with us

---

**T**he Hope Foundation takes the opportunity to congratulate Iswar Sankalpa for completing 15 years of its wonderful journey. We cherish this 15 years of collaboration in Naya Daur Project which is one of the most successful programmes that supports homeless people with psychosocial disabilities from the streets of Kolkata to build a community based support system for an improved life.

We feel extremely proud of the Naya Daur team for their hard work and commitment which is recognised as one of the best practices in Community Mental health by World Health Organisation in June 2021. We really appreciate the support of other organisations' that came forward and allowed Iswar Sankalpa to scale the reach.

*-Hope Foundation*

**I**n the last 15 years, Iswar Sankalpa has made stellar contributions to address the correlated issues of homelessness and mental health. Their innovative and risk-taking attitude have made the growth story very inspiring and worth emulating. It has helped homeless people, who were written-off by the state and their families, overcome mental health conditions, regain well-being and be treated with dignity. Iswar Sankalpa can be immensely credited for fostering an environment with others where homeless people with mental illnesses are not stigmatized and persecuted. For me, the aspect which is most remarkable is their ability to professionalize individuals with a history of mental health issues and homelessness to stand at par with their peers. I have come back deeply inspired and humbled every time I met the team and the communities. Oak is glad to have co-travelled in Iswar Sankalpa's journey so far and wishes them the very best in setting new standards for care and support for homeless people with mental health issues.

*-Oak Foundation*





Administrative Office: 19/3, Pitambar Ghatak Lane, Chetla, Kolkata- 700 027  
Email- info@isankalpa.org; Website - www.isankalpa.org



SUPPORT FOR THE MIND – Iswar Sankalpa



@IswarSankalpa



@iswarsankalpango